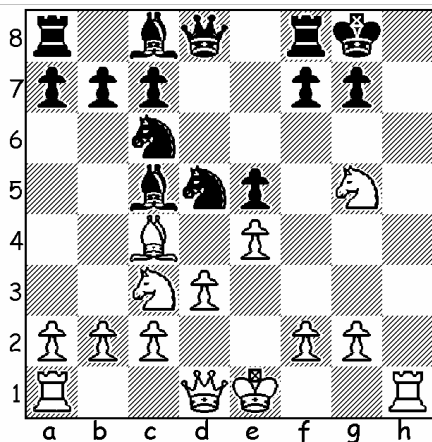


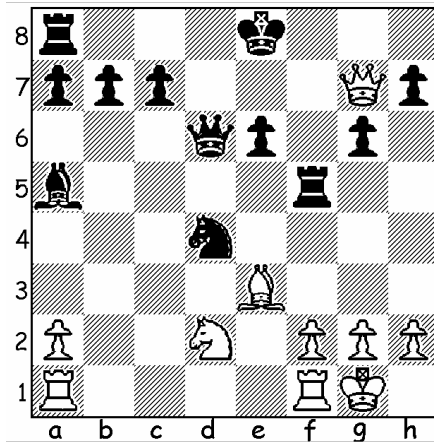
ChessPuzzles.com

Checkmate in Three Moves



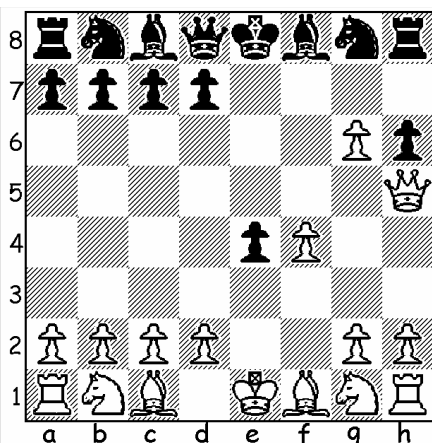
Mate in Three Moves- White to Move:

1. Rh8+ Kxh8
2. Qh5+ Kg8
3. Qh7#



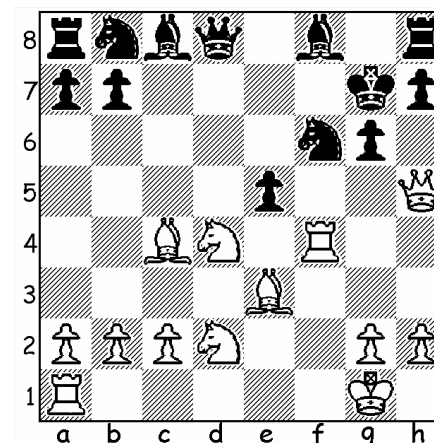
Mate in Three Moves- Black to Move:

1. ... Ne2+
2. Kh1 Qxh2+
3. Kxh2 Rh5#



Mate in Three Moves- White to Move:

1. g7+ Ke7
2. Qe5+ Kf7
3. gxh8=N!#



Mate in Three Moves- White to Move:

1. Qh6+ Kxh6
2. Rh4++ Kg7
3. Bh6#